

Catch My drift

Consultation on the restoration
options for East Chevington
Nature Reserve

Background

- Restored opencast site (1990s)
- Site includes lakes, reedbeds and woodland as well as agricultural land
- Development of habitats within the site has not progressed as intended
- Hydrological and Ecological issues



East Chevington

North Lake



Historic imagery (1996)



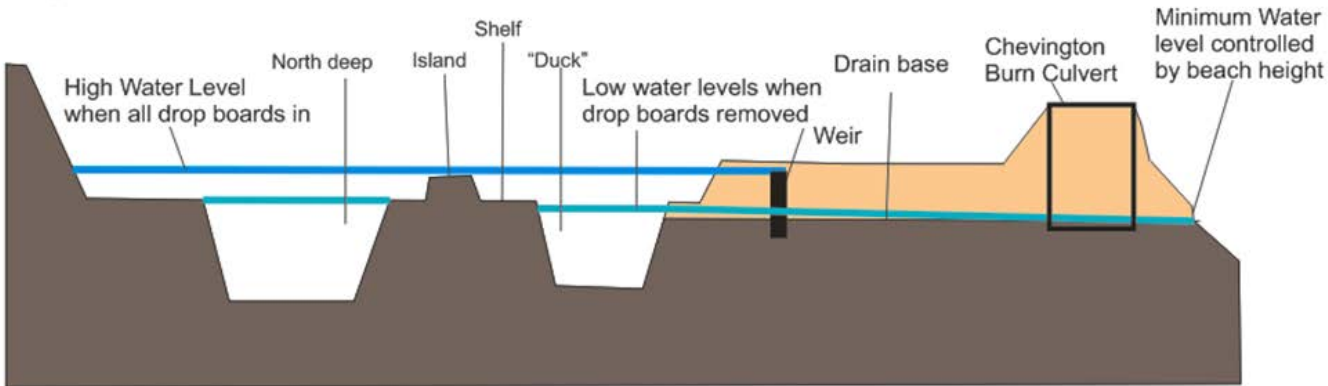
Current imagery

North Lake

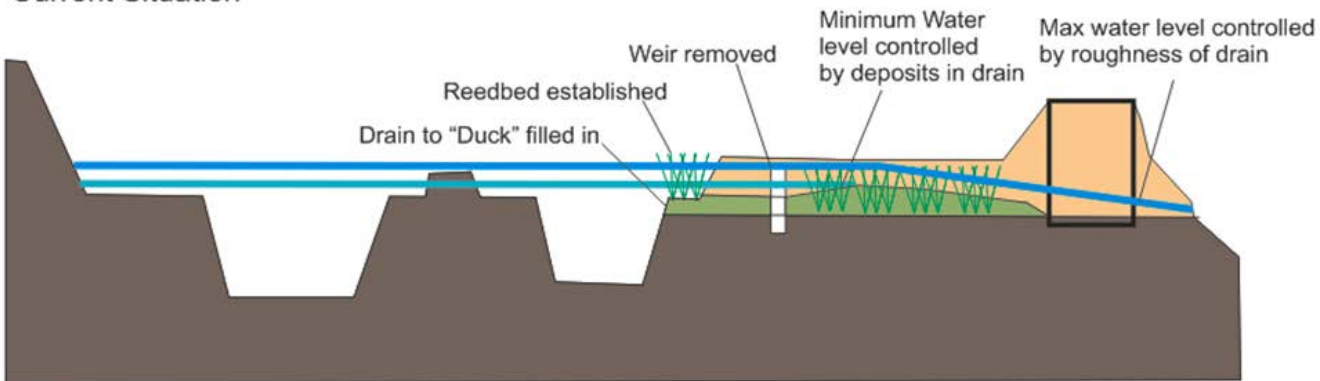
North

South

Original Situation



Current Situation



Drain - North Lake

North Lake



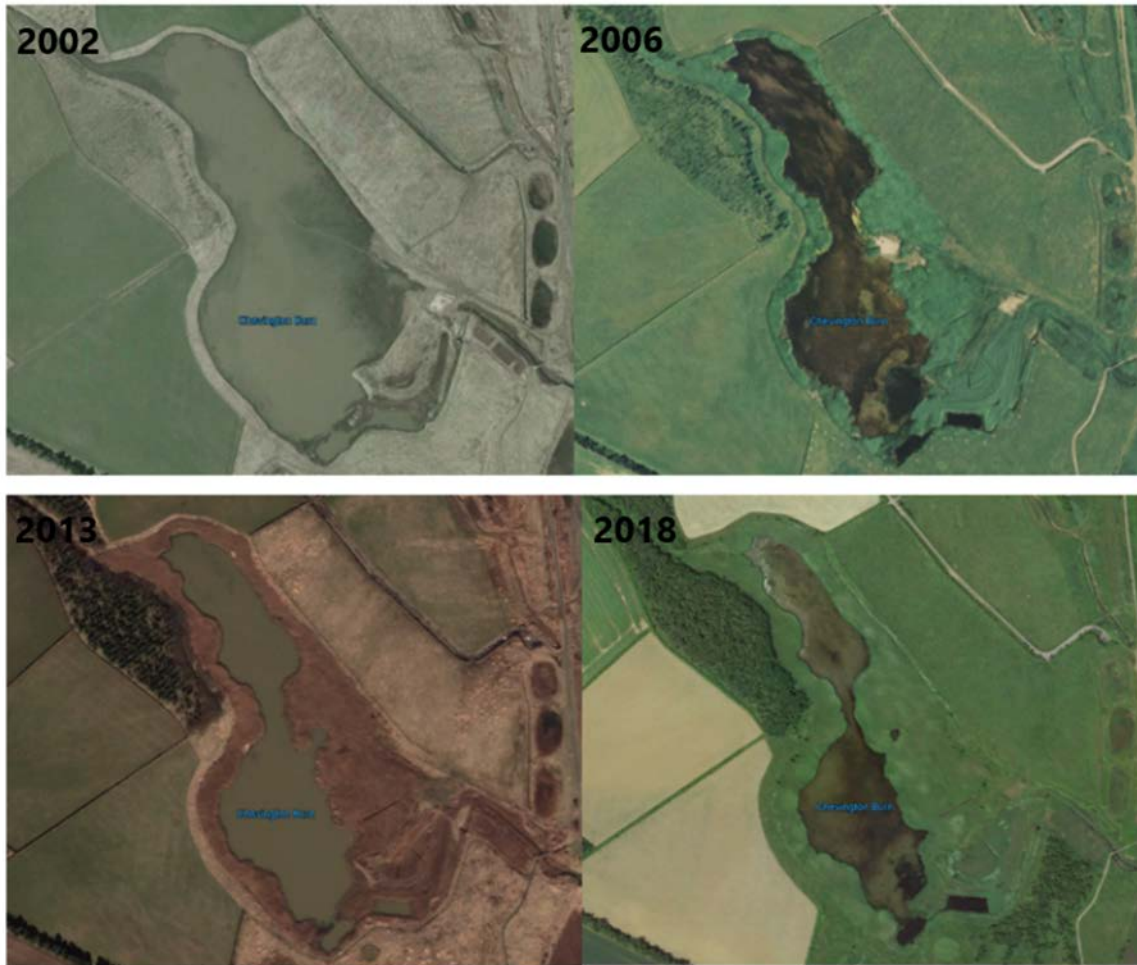
Control Structure

North Lake



Outflow from lake

South Lake (Chevington Burn)



South Lake (Chevington Burn)

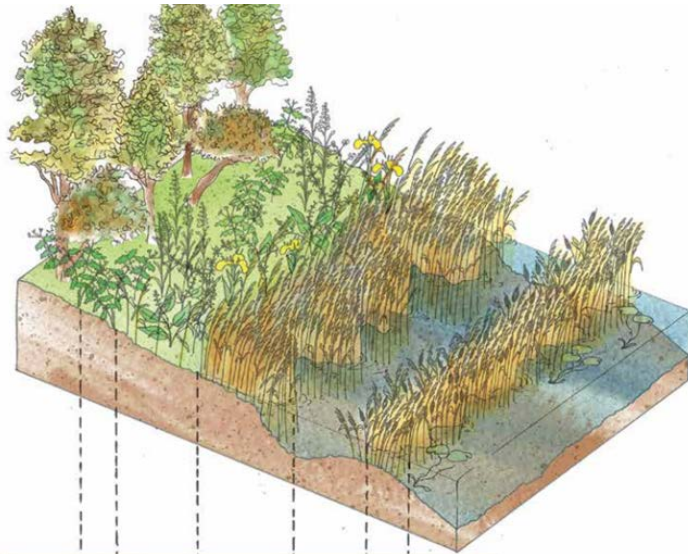


Control Structure

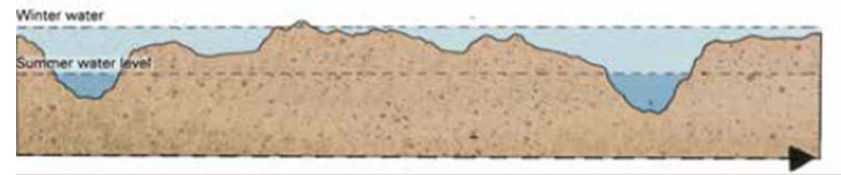
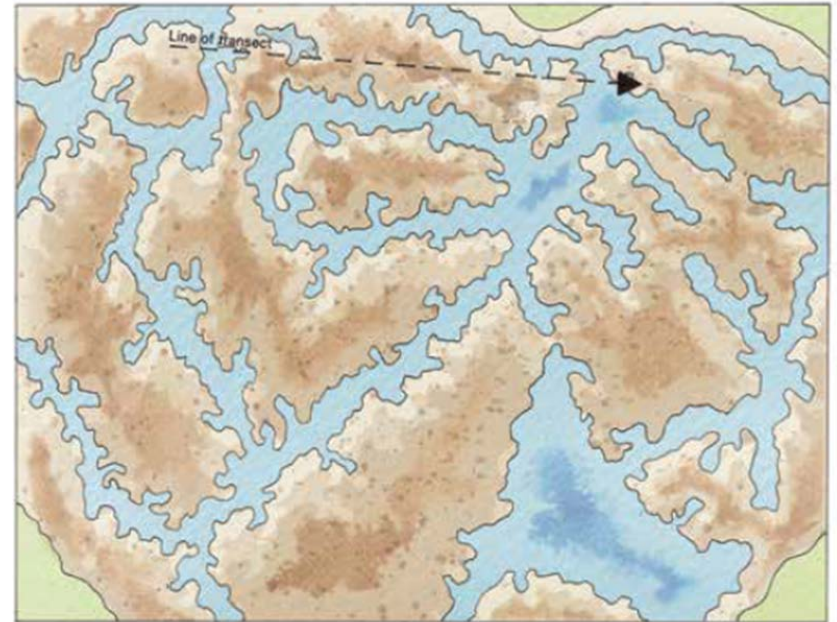
Aims?

- “...creation of a landscape that comprises a mosaic of connected and healthy habitats, rich in biodiversity and able to adapt to future natural and manmade changes”

What makes a good reed bed?



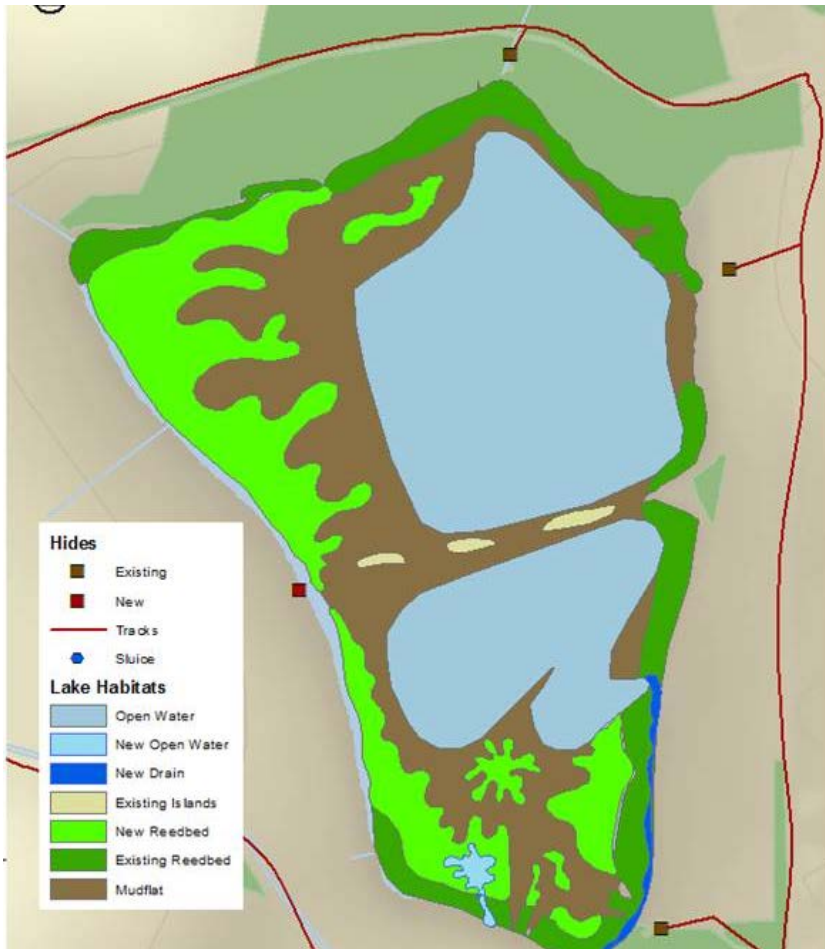
Birds	Bearded tit Sedge warbler Whitethroat	Reed warbler Bittern Water rail	Bittern Mallard Moorhen
Plants	Reed Nettle Willowherb Hemp agrimony	Mare's tail Sedges Rushes Marsh orchids Marsh cinquefoil Water dock Marsh bedstraw Yellow iris Bur-reed	Duckweed Potamogeton Starwort Frogbit
Moths	Dingy footman	Large wainscot	Rush wainscot Silky wainscot Fan wainscot
Beetles			Water veneer Reed leopard moth Brown-veined wainscot
Habitat	Old reed with litter (often wet in winter)	Water usually at or just below surface (dry in summer)	Wet in spring Often dry by late summer
		Ditch	'Reed swamp' (permanently wet)
			Open water



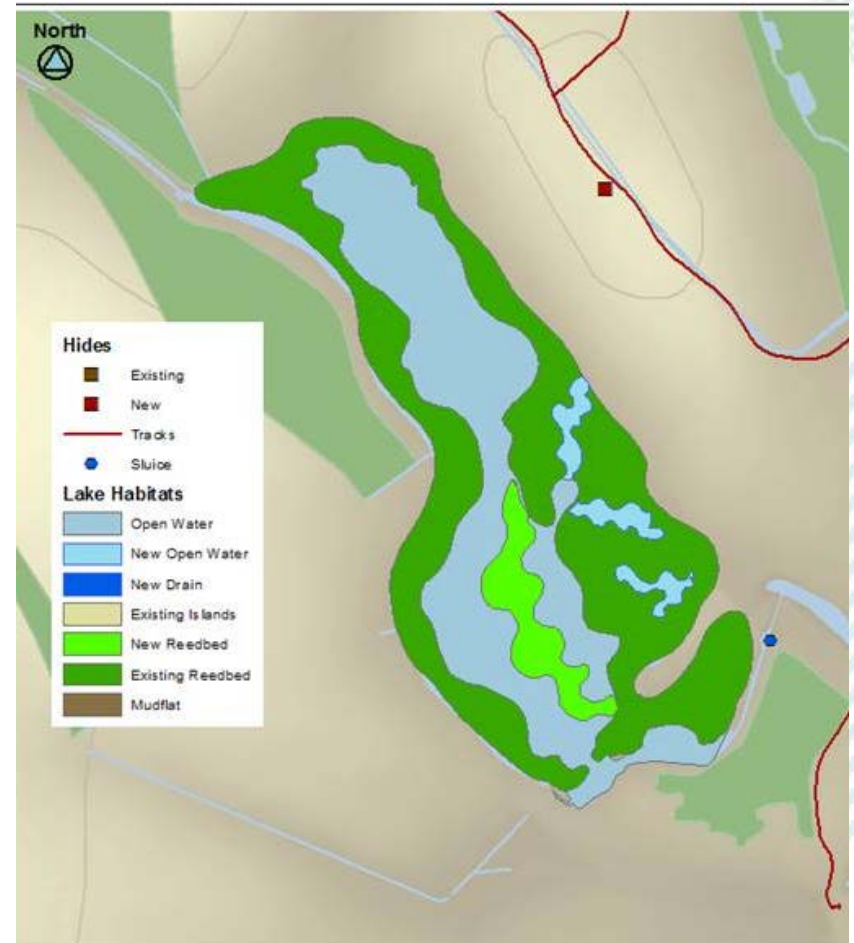
Diverse reedbed edge

Matrix of pools and reedbeds

Potential Options



North Lake



South Lake

How?

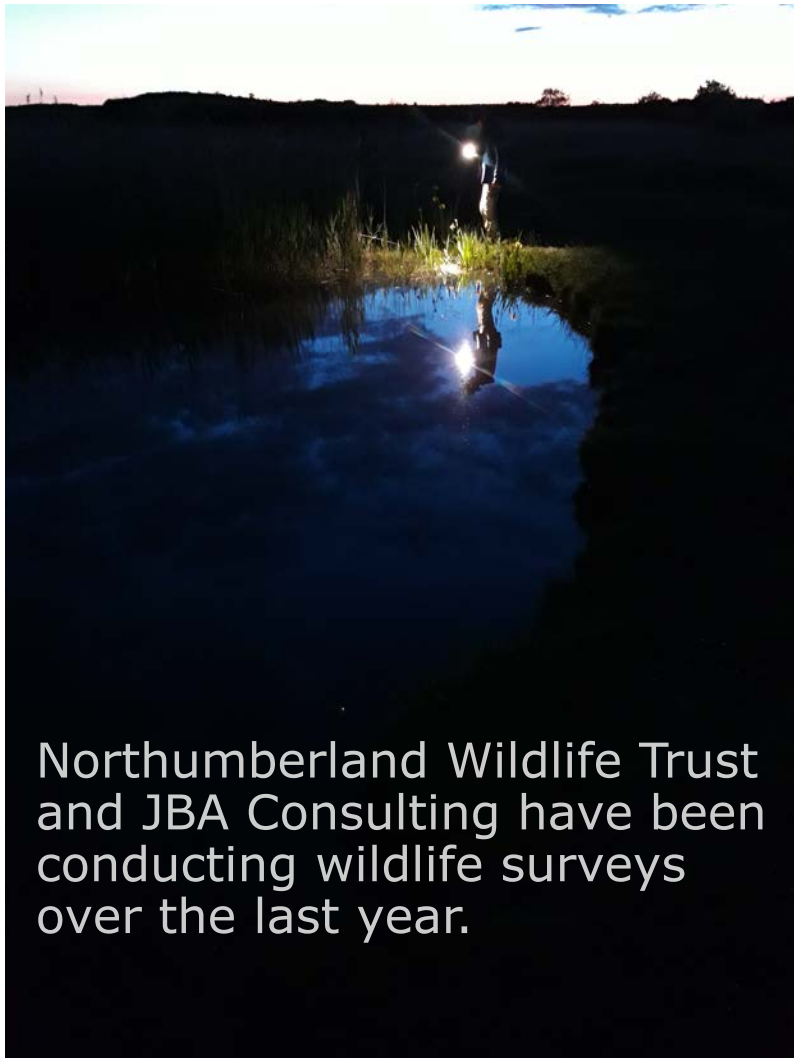
- Retrofitting control structures with functional gates
- Reinstatement of drainage ditch within northern lake
- Reprofilng lake beds to create more diverse habitat



Ecology



Ecology



Ecology

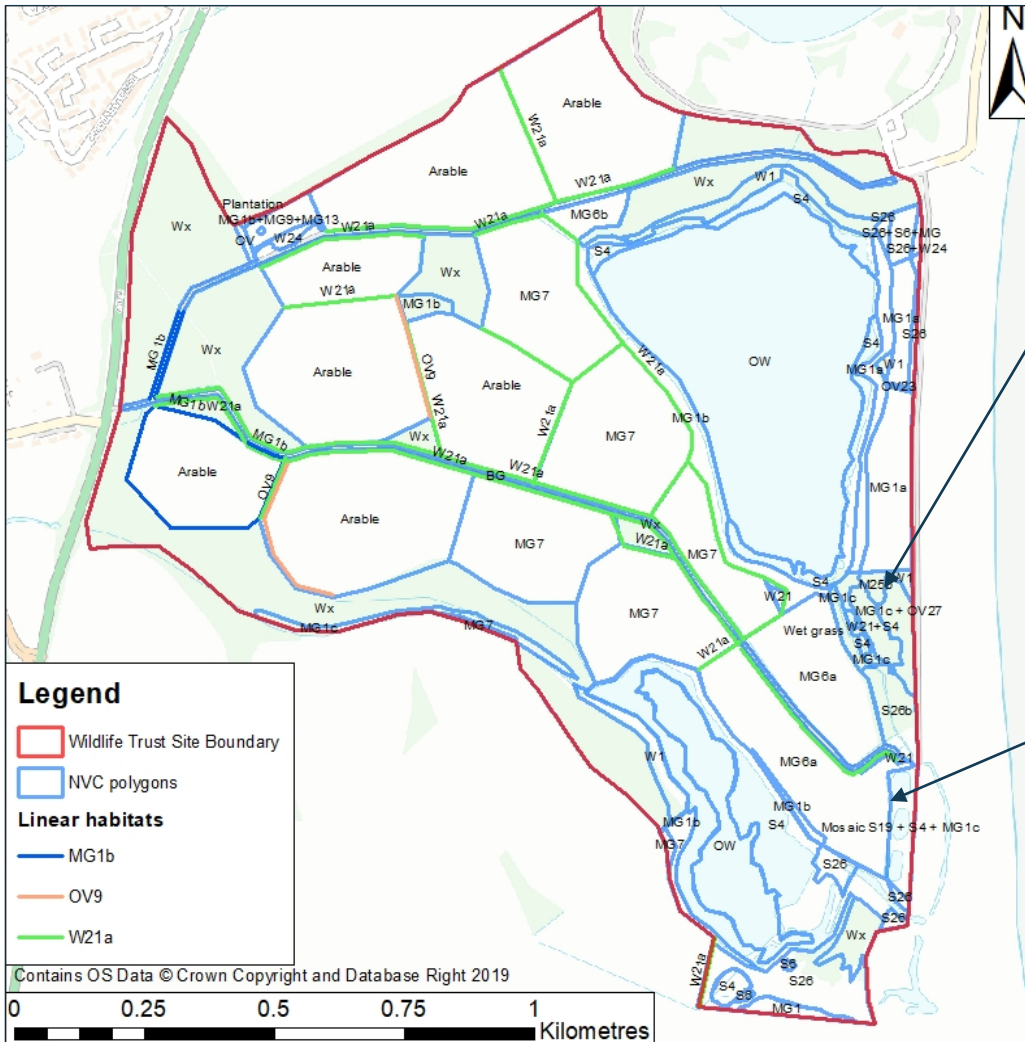


Credit Robin Hick



Ecology





Important species rich grassland:

- Lesser butterfly orchid
- Flea sedge
- Carnation sedge
- Tormentil

INNS:

- New Zealand Pigmyweed
- Curly Waterweed

Ecology



